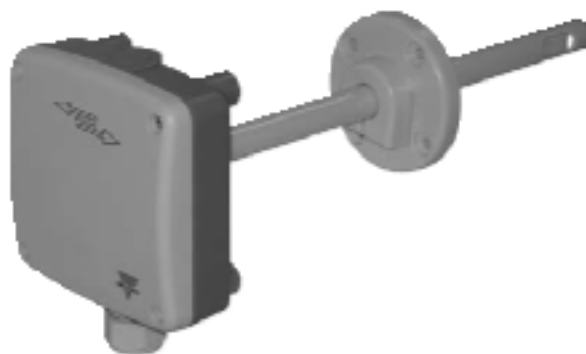




CARLO GAVAZZI

Датчик измерения CO2 CGESC02D 2 V L. Технические характеристики.



По вопросам продаж и поддержки обращайтесь:

Архангельск (8182)63-90-72
Астана +7(7172)727-132
Белгород (4722)40-23-64
Брянск (4832)59-03-52
Владивосток (423)249-28-31
Волгоград (844)278-03-48
Вологда (8172)26-41-59
Воронеж (473)204-51-73
Екатеринбург (343)384-55-89
Иваново (4932)77-34-06
Ижевск (3412)26-03-58
Казань (843)206-01-48

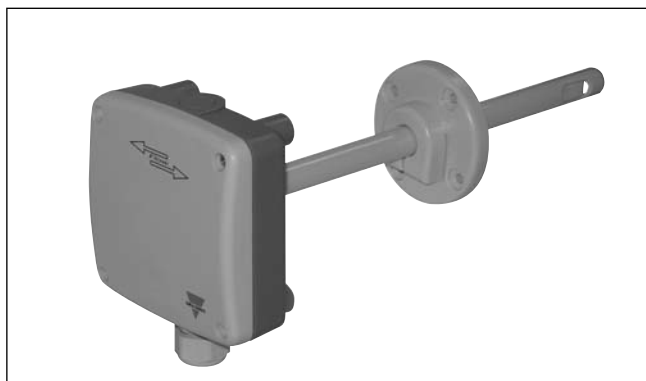
Калининград (4012)72-03-81
Калуга (4842)92-23-67
Кемерово (3842)65-04-62
Киров (8332)68-02-04
Краснодар (861)203-40-90
Красноярск (391)204-63-61
Курск (4712)77-13-04
Липецк (4742)52-20-81
Магнитогорск (3519)55-03-13
Москва (495)268-04-70
Мурманск (8152)59-64-93
Набережные Челны (8552)20-53-41

Нижний Новгород (831)429-08-12
Новокузнецк (3843)20-46-81
Новосибирск (383)227-86-73
Орел (4862)44-53-42
Оренбург (3532)37-68-04
Пенза (8412)22-31-16
Пермь (342)205-81-47
Ростов-на-Дону (863)308-18-15
Рязань (4912)46-61-64
Самара (846)206-03-16
Санкт-Петербург (812)309-46-40
Саратов (845)249-38-78

Смоленск (4812)29-41-54
Сочи (862)225-72-31
Ставрополь (8652)20-65-13
Тверь (4822)63-31-35
Томск (3822)98-41-53
Тула (4872)74-02-29
Тюмень (3452)66-21-18
Ульяновск (8422)24-23-59
Уфа (347)229-48-12
Челябинск (351)202-03-61
Череповец (8202)49-02-64
Ярославль (4852)69-52-93

сайт: <http://gavazzi.nt-rt.ru> || **эл. почта:** cgo@nt-rt.ru

Environmental Sensors CO₂ Transmitters



- Very simple installation
- Compact housing
- Auto-calibration
- Traceable calibration
- Measuring ranges: 0...2000ppm or 0...5000ppm
- Analogue or switching output
- Duct mounting
- CE, RoHS

Product Description

Duct mounted CO₂ transmitters of the CGES series are designed for HVAC applications. The CO₂ sensing element uses the Non-Dispersive Infrared Technology (NDIR). A patented auto-calibration procedure compensates for drift caused

by the aging of the sensing element and guarantees outstanding long term stability. Installed into a duct a small flow of air will be established by convection through the probe into the transmitter housing and back into the duct. Inside the transmitter

housing the air will diffuse through a membrane into the CO₂ sensing element. The operation in closed loop air stream avoids pollution of the CO₂ sensor. Measuring ranges of 0...2000ppm and 0...5000ppm correspond to an analogue interface of

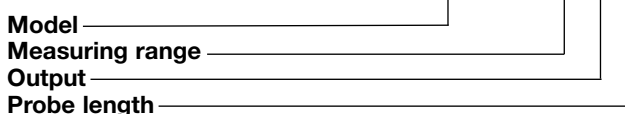
0-10V or 4-20mA. Selectively a switching output with adjustable switching point and hysteresis is available. The instruments can be easily positioned in the duct with the standard mounting flange.

Approvals



Ordering Key

CGESC02D 2 V L



Type Selection

Model	Measuring Range	Output	Probe Length												
CGESC02D CO ₂ Transmitter	<table border="1"> <tr><td>2</td><td>0...2000ppm</td></tr> <tr><td>5</td><td>0...5000ppm</td></tr> </table>	2	0...2000ppm	5	0...5000ppm	<table border="1"> <tr><td>V</td><td>0-10V</td></tr> <tr><td>A</td><td>4-20mA</td></tr> <tr><td>S</td><td>Switching Output</td></tr> </table>	V	0-10V	A	4-20mA	S	Switching Output	<table border="1"> <tr><td>L</td><td>200mm</td></tr> </table>	L	200mm
2	0...2000ppm														
5	0...5000ppm														
V	0-10V														
A	4-20mA														
S	Switching Output														
L	200mm														

General Data

Voltage supply SELV	24VAC ±20% 15-35VDC SELV= Safety Extra Low Voltage	Temperature ranges working temperature range storage temperature range	-5...55°C/23...131°F -20...60°C/-4...140°F
Power Requirement	<3W	Electromagnetic compatibility	EN 61000-6-3 ÖVE EN61326-1+A1+A2:05.2002 EN 61000-6-1 FCC Part 15 ICES-003 ClassB
Warm up time	<5min		
Humidity	0...95% (not condensing)		

Measuring Values

CO ₂		Response time τ_{63}	< 120s
Measurement principle	Non-Dispersive Infrared Technology (NDIR)	Temperature dependence	typ. 2ppm CO ₂ /°C
Sensing element	Dual Source Infrared System	Long term stability	typ. 20ppm / year
Measuring range	0...2000ppm / 0...5000ppm	Sample rate	~30s
Accuracy @ 20°C/68°F and 1013mbar	0...2000ppm <±(50ppm +2% of meas. value) 0...5000ppm <±(50ppm +3% of meas. value) Traceable to international standards, administrated by NIST, PTB, BEV...		