

Технические характеристики

По вопросам продаж и поддержки обращайтесь:

Алматы (7273)495-231	Казань (843)206-01-48	Новокузнецк (3843)20-46-81	Смоленск (4812)29-41-54
Архангельск (8182)63-90-72	Калининград (4012)72-03-81	Новосибирск (383)227-86-73	Сочи (862)225-72-31
Астрахань (8512)99-46-04	Калуга (4842)92-23-67	Омск (3812)21-46-40	Ставрополь (8652)20-65-13
Барнаул (3852)73-04-60	Кемерово (3842)65-04-62	Орел (4862)44-53-42	Сургут (3462)77-98-35
Белгород (4722)40-23-64	Киров (8332)68-02-04	Оренбург (3532)37-68-04	Тверь (4822)63-31-35
Брянск (4832)59-03-52	Краснодар (861)203-40-90	Пенза (8412)22-31-16	Томск (3822)98-41-53
Владивосток (423)249-28-31	Красноярск (391)204-63-61	Пермь (342)205-81-47	Тула (4872)74-02-29
Волгоград (844)278-03-48	Курск (4712)77-13-04	Ростов-на-Дону (863)308-18-15	Тюмень (3452)66-21-18
Вологда (8172)26-41-59	Липецк (4742)52-20-81	Рязань (4912)46-61-64	Ульяновск (8422)24-23-59
Воронеж (473)204-51-73	Магнитогорск (3519)55-03-13	Самара (846)206-03-16	Уфа (347)229-48-12
Екатеринбург (343)384-55-89	Москва (495)268-04-70	Санкт-Петербург (812)309-46-40	Хабаровск (4212)92-98-04
Иваново (4932)77-34-06	Мурманск (8152)59-64-93	Саратов (845)249-38-78	Челябинск (351)202-03-61
Ижевск (3412)26-03-58	Набережные Челны (8552)20-53-41	Севастополь (8692)22-31-93	Череповец (8202)49-02-64
Иркутск (395)279-98-46	Нижний Новгород (831)429-08-12	Симферополь (3652)67-13-56	Ярославль (4852)69-52-93
Россия (495)268-04-70	Киргизия (996)312-96-26-47	Казахстан (7172)727-132	

Energy Management Energy Management Software Type CptASoft



- Software to set all instrument's parameters on the CPT Advanced models
- Reading of instantaneous variables and energy meters
- Management of up to 255 single remote CPT Ax's over a RS485 network (or of the single meter by the RS232)
- Management of an archive with various configurations

Product description

Multi-language programming software for all the working parameters of the CPT Advanced instruments. It allows the real-time reading of all the variables too. The software can be used with the most common operating systems such as: Windows 98/2000/XP. The connection between CPT A and the PC can be realised by RS232 or RS485 interface or by the auxiliary serial communication port.

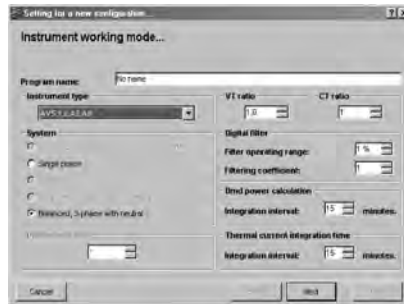
How to order

CptASoft

The software can be downloaded free of charge from Carlo Gavazzi's web site
CptCABLE (cable to communicate with the meter through the auxiliary serial communication port).
CptASoft-kit = CptASoft + CptCABLE

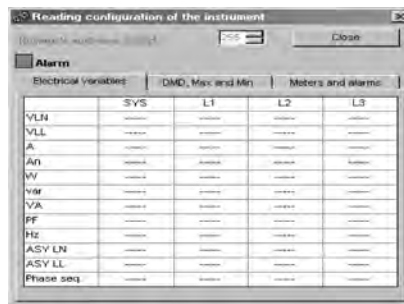
General Specifications

Programming menu



The CptASoft manages an archive of configurations which may be easily recalled. A pre-set programming configuration can be downloaded and, if necessary, modified.

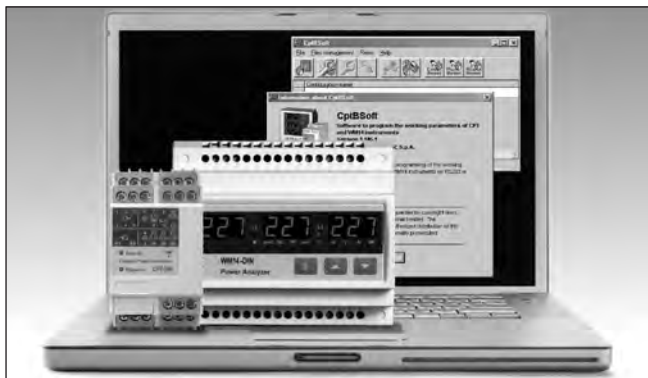
Reading of instantaneous variables and meters



It allows the real-time displaying of all the variables divided in three pages, one dedicated to the instantaneous variables, one dedicated to the DMD/Min/Max values and one page dedicated to the meters and alarms status.

NOTE: the correct serial communication through RS485 can be carried out by means of our serial communication converter RS485/RS232 model SIUPC2 or RS485-RS232 to TCP/IP with the model VCP-DIN

Energy Management Energy Management Software Type CptBSoft



- Software to set all instrument's parameters on the CPT and WM14 Basic models
- Reading of instantaneous variables and energy meters
- Management of up to 255 single remote CPT / WM14 Bx models over a RS485 network (or of the single meter by the RS232)
- Management of an archive with various configurations

Product description

Multi-language programming software for all the working parameters of the CPT and WM14 Basic instruments. It allows the real-time reading of all the variables too. The software can be used with the most common operating systems such as: Windows 98/2000/XP. The connection between CPT B/ WM14B and the PC can be realised by RS232 or RS485 interface or by the auxiliary serial communication port.

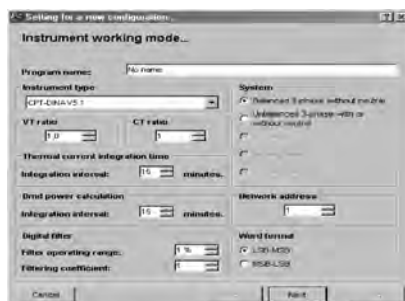
How to order

CptBSoft (Software)

The software can be downloaded free of charge from Carlo Gavazzi's web site
CptCABLE (cable to communicate with the meter through the auxiliary serial communication port)
CptBSoft-kit = CptBSoft + CptCABLE

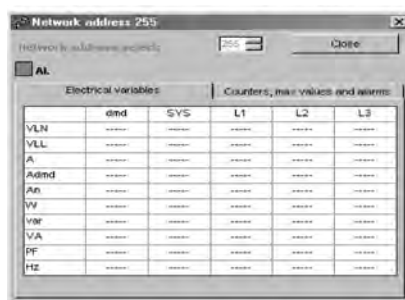
General Specifications

Programming menu



The CptBSoft manages an archive of configurations which may be easily recalled. A pre-set programming configuration can be downloaded and, if necessary, modified.

Reading of instantaneous variables and meters



It allows the real-time displaying of all the variables divided in two pages, one dedicated to the instantaneous variables and one page dedicated to the meters and alarms status.

NOTE: the correct serial communication through RS485 can be carried out by means of our serial communication converter RS485/RS232 model SIUPC2 or RS485-RS232 to TCP/IP with the model VCP-DIN.

EM21SOFT



Selected parameters

FUNCTION	Configuration software
PROGRAMMING TOOL FOR	EM21 72D
TYPE	Software

Others

DESCRIPTION	Programming tool for EM21
OPERATING SYSTEM	Windows XP, Vista

Energy Management Energy Management Software Type EM24 26Soft



- Software to set all instrument parameters on the EM24-DIN AND EM26-96 models
- Reading of instantaneous variables and energy meters
- Management of up to 160 single remote EM24-DIN and/or EM26-96 models over a RS485 network
- Management of an archive with various configurations

Product description

Multi-language programming and reading software for of all the working parameters and reading of all the variables of the EM24-DIN and EM26-96 instruments by RS232 or

RS485 interface. The software can be used with the most common operating systems such as: Windows 98/2000/XP

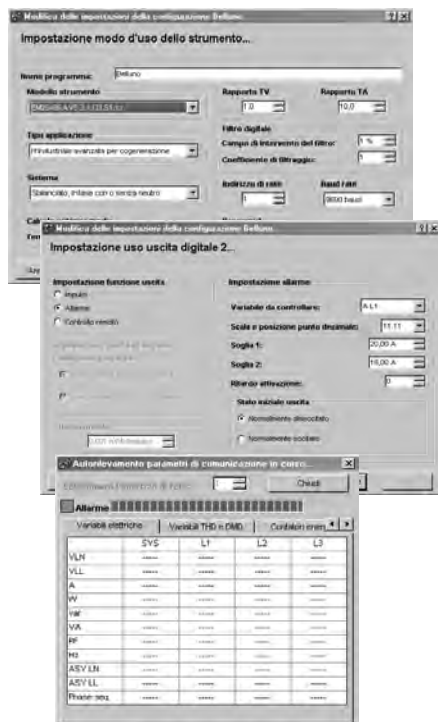
How to order

EM2426Soft

The software can be downloaded free of charge from Carlo Gavazzi's web site

General Specifications

Programming menu



Reading of instantaneous variables and meters

The EM2426Soft allows to create in an easy way the requested configuration of the instruments with the relevant system setting (CT and VT ratio, system, alarms, etc.), it is able also to manage an archive of configurations which may be easily recalled. A pre-set programming configuration can be downloaded and if necessary modified.

It allows four real-time displaying of all the variables divided in three pages, one dedicated to the instantaneous variables, one to the THD/DMD/Min/Max values, one to the energy meters and one to the utility meters and alarm status.

NOTE: the correct serial communication through RS485 can be made by means of our serial communication converters RS485/RS232 model SIUPC2

Energy Management Energy Management Software Type PQTSoft Network

CARLO GAVAZZI

• Main Menu Description



- Management of up to 255 PQT90 in a local RS485 network connected to a PC
- Management of up to 100 single remote PQT90's
- Management of up to 25000 PQT90's in max. 100 remote RS485 networks composed of 250 instruments each.
- Monitoring and control of all the electrical variables
- Event stamping
- Manual and automatic download of the values logged in the 2 Mb memory

Product Description

Software in English and other languages for the data downloading from the memory of PQT90. Personalized SMS can be associated to the set alarms. Management of a digital or analogue com-

munication modem. The software can be used with the most common operating systems such as: Windows 95/98/98SE/2000/NT/XP.

How to order

PQTSOFTNETWORK

Model (software only)

PQTSOFTNETWORK-KIT

Model (software and cables to be used by modem/GSM)

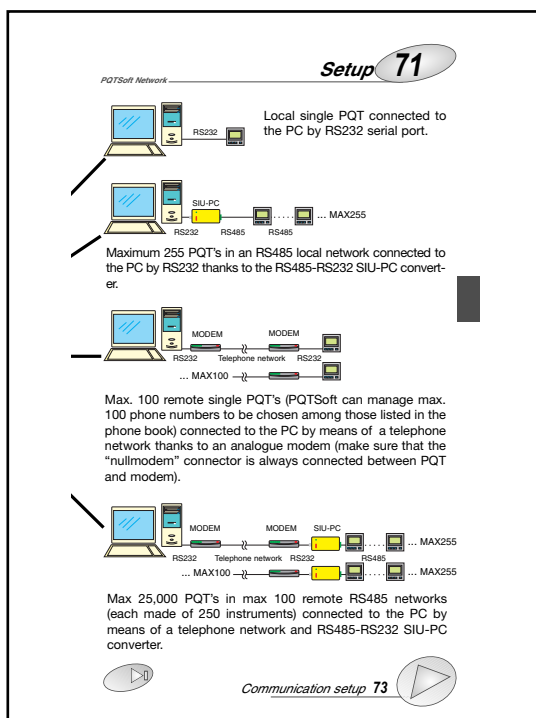
Important Note



The correct data transfer by means of RS485 (PQT90) and RS232 (PC) is to be made by means of our serial communication adaptor RS485/RS232 model SIUPC2.

General Characteristics

Configuration menu



Operating mode

Three operation modes can be selected:

- local RS485;
- management of a communication modem for each single instrument (data download);
- management of a communication modem from the local network (RS485 communication, data download).

Data logging

In pre-formatted XLS files (excel data base). The instantaneous variables, energies, gas, and water are saved separately in specific files.

Data download

Manual or automatic download on regular basis.

Modem communication.

Phonebook management (storage of 100 numbers).

Each number can be associated to a modem corresponding either to a single instrument or to a network of instruments. Each network can manage up to 255 local instruments.

Energy Management Energy Management Software Type PQTSoft Remote



- Software to set all instrument's parameters
- Programming of the event stamping
- Selection of up to max 8 variables to be stored
- Management of an archive with various configurations
- Setting of personalized SMS and management of phonebook
- Reading of instantaneous variables and energy, water and gas meters

Product Description

Communication software to program all PQT90 parameters and relevant functions. Setting of personalized messages associated to the alarms being set and sent by SMS. Automatic configuration of ana-

logue or digital communication modem.

The software can be used with the most common operating systems such as:

Windows 95/98/98SE/2000/NT/XP.

How to order

PQTSOFTREMOTE

Model _____

The software can be downloaded free of charge from Carlo Gavazzi's web site.

Important note



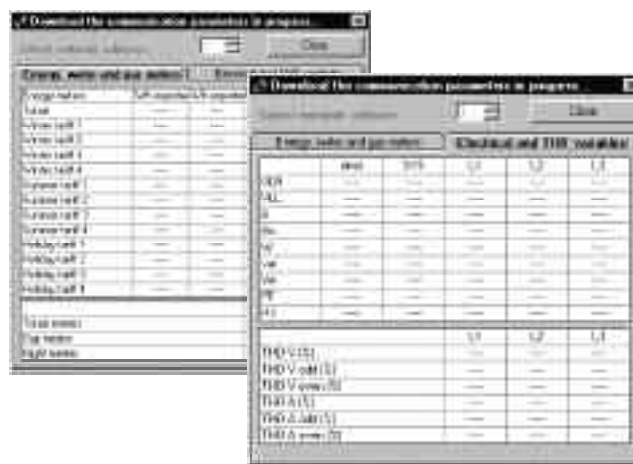
The correct data transfer by means of RS485 (PQT90) and RS232 (PC) is to be made by means of our serial communication adaptor RS485/RS232 model SIUPC2.

General Characteristics

Programming menu



PQT Soft Remote manages an archive of configurations which may be easily recalled. The preset programming can be downloaded from PQT90 and if necessary modified. The variables to be logged into the 2MB memory (max 8) can be set and selected by the user.



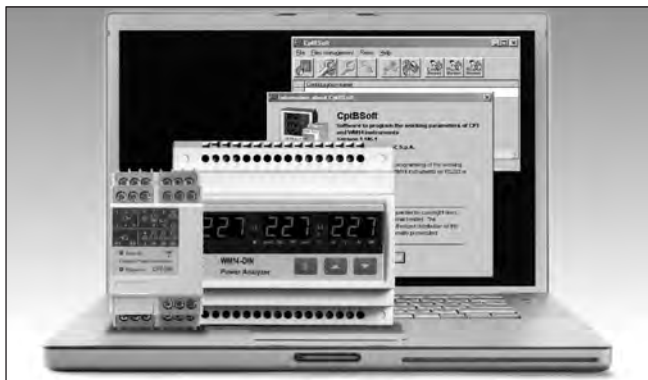
Reading of instantaneous variables and meters

It allows the real-time displaying of all the variables divided into 2 pages, one dedicated to the instantaneous variables and one dedicated to the meters.

Setting of SMS messages and telephone numbers

An alarm can be associated to the variables measured by the instrument: if the alarm is enabled, then a personalized SMS message is automatically sent.

Energy Management Energy Management Software Type CptBSoft



- Software to set all instrument's parameters on the CPT and WM14 Basic models
- Reading of instantaneous variables and energy meters
- Management of up to 255 single remote CPT / WM14 Bx models over a RS485 network (or of the single meter by the RS232)
- Management of an archive with various configurations

Product description

Multi-language programming software for all the working parameters of the CPT and WM14 Basic instruments. It allows the real-time reading of all the variables too. The software can be used with the most common operating systems such as: Windows 98/2000/XP. The connection between CPT B/ WM14B and the PC can be realised by RS232 or RS485 interface or by the auxiliary serial communication port.

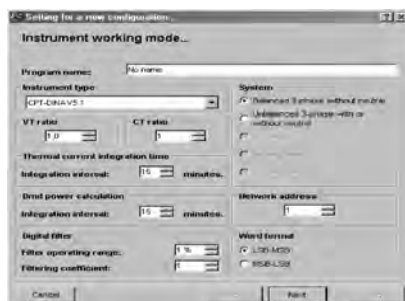
How to order

CptBSoft (Software)

The software can be downloaded free of charge from Carlo Gavazzi's web site
CptCABLE (cable to communicate with the meter through the auxiliary serial communication port)
CptBSoft-kit = CptBSoft + CptCABLE

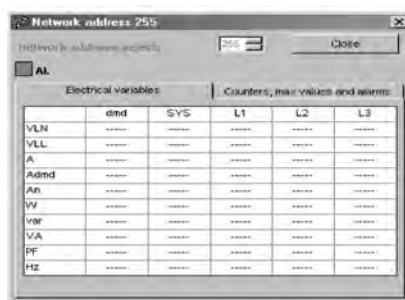
General Specifications

Programming menu



The CptBSoft manages an archive of configurations which may be easily recalled. A pre-set programming configuration can be downloaded and, if necessary, modified.

Reading of instantaneous variables and meters



It allows the real-time displaying of all the variables divided in two pages, one dedicated to the instantaneous variables and one page dedicated to the meters and alarms status.

NOTE: the correct serial communication through RS485 can be carried out by means of our serial communication converter RS485/RS232 model SIUPC2 or RS485-RS232 to TCP/IP with the model VCP-DIN.

Energy Management Energy Management Software Type WM4Soft Network

CARLO GAVAZZI



- Management of up to 255 WM4's in a local RS485 network connected to a PC.
- Management of up to 100 single remote WM4's
- Management of up to 25000 WM4's in max. 100 remote RS485 networks composed of 250 instruments each.
- Monitoring and control of all the electrical variables
- Event stamping
- Manual and automatic download of the values logged in the 2 Mb memory

Product Description

Software in English and other languages for the data downloading from the memory of WM4. Personalized SMS can be associated to the set alarms. Management of a digital or

analogue communication modem. The software can be used with the most common operating systems such as: Windows 95/98/98SE/2000/NT/XP.

How to order

WM4SOFTNETWORK

Model (software only)

WM4SOFTNETWORK-KIT

Model (software and cables to be used by modem/GSM)

Important Note



The correct data transfer by means of RS485 (WM4) and RS232 (PC) is to be made by means of our serial communication adaptor RS485/RS232 model SIUPC2.

General Characteristics

Configuration menu

THE SOFTWARE IN BRIEF
WM4Soft Network has been developed for the data transfer from the instrument WM4-98 to the PC and viceversa. The data download from WM4 to the PC allows the download and saving of the values logged in the 2MB memory of WM4; the values can be saved as an Excel table. The connection between PC and WM4-98 allows to transfer, in the memory of WM4, texts and telephone numbers to whom the alarm messages are to be sent. The WM4Soft has been mainly developed to automatically download the values logged in the WM4; it is therefore necessary to configure first of all the "automatic data download" dialog boxes. The data transfer can be carried out in various modes: it depends if the WM4-98 is part of a local or of a remote network of instruments. The figure on the following page shows the possible communication modes and the correct selection to be made in the WM4Soft network.

Local single WM4 directly connected to the PC by RS232 serial port.

Maximum 10 WM4 in an RS485 local network connected to the PC by RS232-RS485 SIU-PC converter.

Maximum 100 remote single WM4 (WM4Soft can manage max. 100 phone numbers to be chosen among those listed in the phone book) connected to the PC by means of a telephone network thanks to a modem (make sure that the "nullmodem" connector is always connected between WM4 and modem).

1000 instruments located in max 100 remote RS485 networks, each made of max 10 instruments, connected to the PC by means of a telephone network thanks to the modem and the RS485-RS232 SIU-PC converter. Also in this case the "nullmodem" connector is always connected between SIU-PC and modem.

4 Specifications are subject to change without notice

Operating mode

Three operation modes can be selected:

- local RS485;
- management of a communication modem for each single instrument (data download);
- management of a communication modem from the local network (RS485 communication, data download).

Data logging

In pre-formatted XLS files (excel data base). The instantaneous variables, energies, gas, and water are saved separately in specific files.

Data download

Manual or automatic download on regular basis.

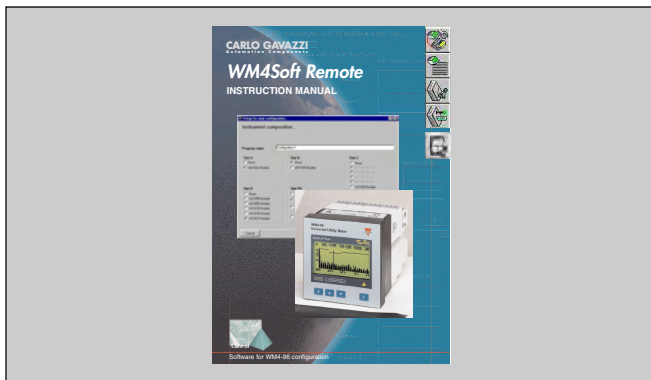
Modem communication.

Phonebook management (storage of 100 numbers).

Each number can be associated to a modem corresponding either to a single instrument or to a network of instruments. Each network can manage up to 255 local instruments.

Energy Management Energy Management Software Type WM4Soft Remote

CARLO GAVAZZI



- Software to set all instrument's parameters
- Programming of the event stamping
- Selection of up to max 8 variables to be stored
- Management of an archive with various configurations
- Setting of personalized SMS and management of phonebook
- Reading of instantaneous variables and energy, water and gas meters

Product Description

Communication software to program all WM4 parameters and relevant functions. Setting of personalized messages associated to the alarms being set and sent by SMS. Automatic configuration of ana-

logue or digital communication modem.

The software can be used with the most common operating systems such as: Windows 95/98/98SE/2000/NT/XP.

How to order

WM4SOFTREMOTE

Model _____

The software can be downloaded free of charge from Carlo Gavazzi's web site.

Important note



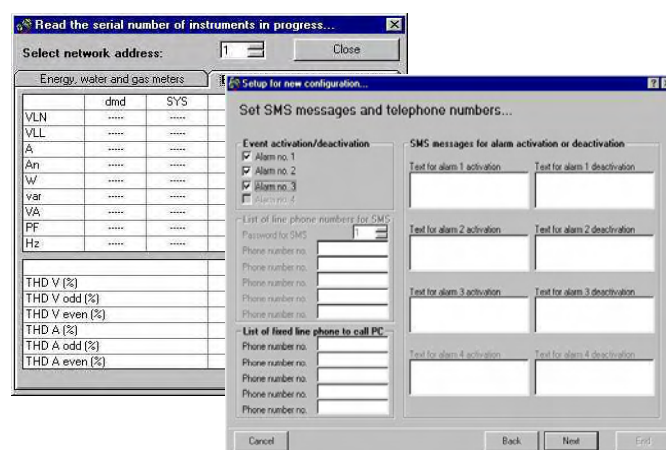
The correct data transfer by means of RS485 (WM4) and RS232 (PC) is to be made by means of our serial communication adaptor RS485/RS232 model SIUPC2.

General Characteristics

Programming menu



WM4 Soft Remote manages an archive of configurations which may be easily recalled. The preset programming can be downloaded and if necessary modified. The variables to be logged into the 2MB memory (max 8) can be set and selected by the user.



Reading of instantaneous variables and meters

It allows the real-time displaying of all the variables divided into 2 pages, one dedicated to the instantaneous variables and one dedicated to the meters.

Setting of SMS messages and telephone numbers

An alarm can be associated to the variables measured by the instrument: if the alarm is enabled, then a personalized SMS message is automatically sent.

Energy Management Energy Management Software Type Wm5Soft



- Software to program all the programming parameters of the WM5 model
- Reading of instantaneous variables and energy meters
- Management of up to 255 single remote WM5 over a RS485 or TCP/IP network (or of a single instrument by the RS232 or optical port)
- Management of an archive with various configurations

Product description

Multi-language programming and reading software for all the working parameters of the WM5 instruments by TCP/IP or RS485 network; in case of a direct connection these operations can be managed

by a RS232 network or optical port. The reading function of all the variables is available. The software can be used with the most common operating systems such as: Windows 98/2000/XP.

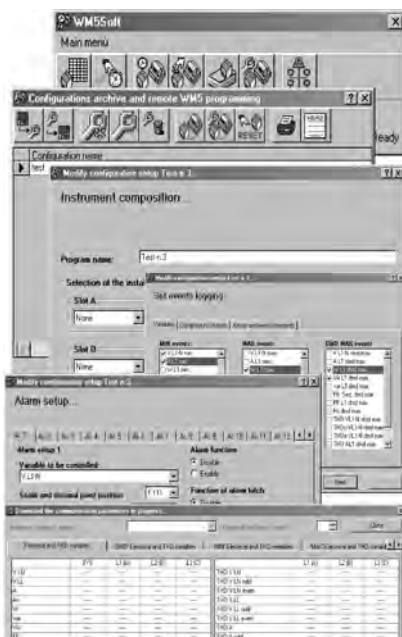
How to order

Wm5Soft

The software can be downloaded free of charge from Carlo Gavazzi's web site.

General Specifications

Programming menu



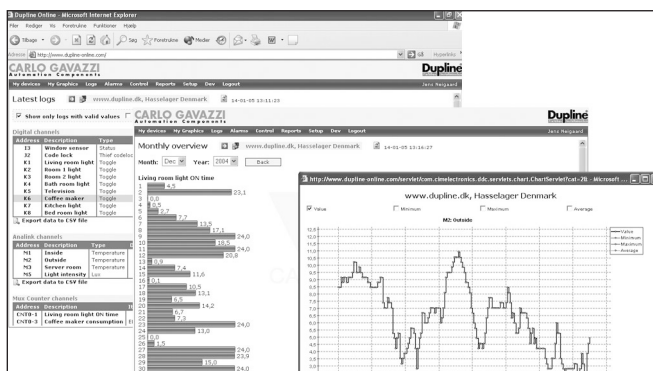
Reading of instantaneous variables and meters

The Wm5Soft manages an archive of configurations which may be easily recalled. A preset programming configuration can be downloaded and, if necessary, modified.

It allows the real-time displaying of all the variables divided in seven pages dedicated to the instantaneous electrical and relevant THD variables, to the DMD/Min/Max electrical values, to the total and partial meters.

NOTE: the correct serial communication through RS485 can be carried out by means of our serial communication converter RS485/RS232 model SIUPC2 or RS485-RS232 to TCP/IP with the model VCP-DIN.

Dupline-Online Subscription Types DUP-OL-FIRST, DUP-OL-EXTRA



- Data Logging, Alarm Monitoring and Control of remote or local Dupline® networks
- Logged data and events are transmitted to a Central Server via the Internet or the GSM network
- The Central server is provided by Carlo Gavazzi on subscription base – no need to install software, no need to invest in new PC
- Data can be accessed from any PC with Internet connection using a standard browser (e.g. Internet Explorer)
- Access to data is protected by username and password
- The Data communication with the Dupline Data Logger over the Internet is encrypted
- Easy export of data as EXCEL-files (e.g. consumption of energy, water and gas from several departments over a certain period of time)
- Trend curves and histograms
- Alarm handling system with reporting via SMS and/or E-mail and acknowledgement of alarms via the Internet
- Switching of digital signals via the Internet
- Daily back-up of the dupline-online database
- Database holds logged data for a period of 3 years
- Subscription includes capacity to save 500.000 loggings in the database
- Extremely easy Set-up and Configuration
- Possibility to select language on the user menu
- Operates with G3800X036 (Dupline® Data Logger)
- dupline-online subscription is valid for 12 months, where after it must be renewed

Product Description

A subscription to Dupline®-Online allows the user to register a Dupline® Data Logger (G3800X036) on the Central Dupline®-Online Server. The subscription is valid for a period of 12 months, where after it has to be renewed to continue the service. The Dupline® Data Logger must be configured to send logged data and events to the Central dupline-online server via Internet or GSM. The user gets a user name and password to access the logged

Dupline® data from any PC with Internet connection using a standard browser (e.g. Internet Explorer), hence there is no need to install software and to invest in new PC. On the dupline-online user menu, data can be presented in tables or as curves or histograms, data can be exported as EXCEL-files, digital outputs can be switched, and it possible to set up an alarm handling system which can send out alarms via SMS or E-mail.

Type Selection

Text

- 12 Month Subscription for the first Dupline® Data Logger (G3800X036) under a new user name.
- 12 month Subscription for an extra Dupline® Data Logger (G3800X036) under an existing user name.

Ordering no.

- DUP-OL-FIRST
- DUP-OL-EXTRA

Mode of Operation

Dupline®-Online is an Internet based concept for monitoring and control of remote or local facilities such as water works, factories, power stations, apartment buildings, super markets, gas stations, pump stations and unmanned railway stations.

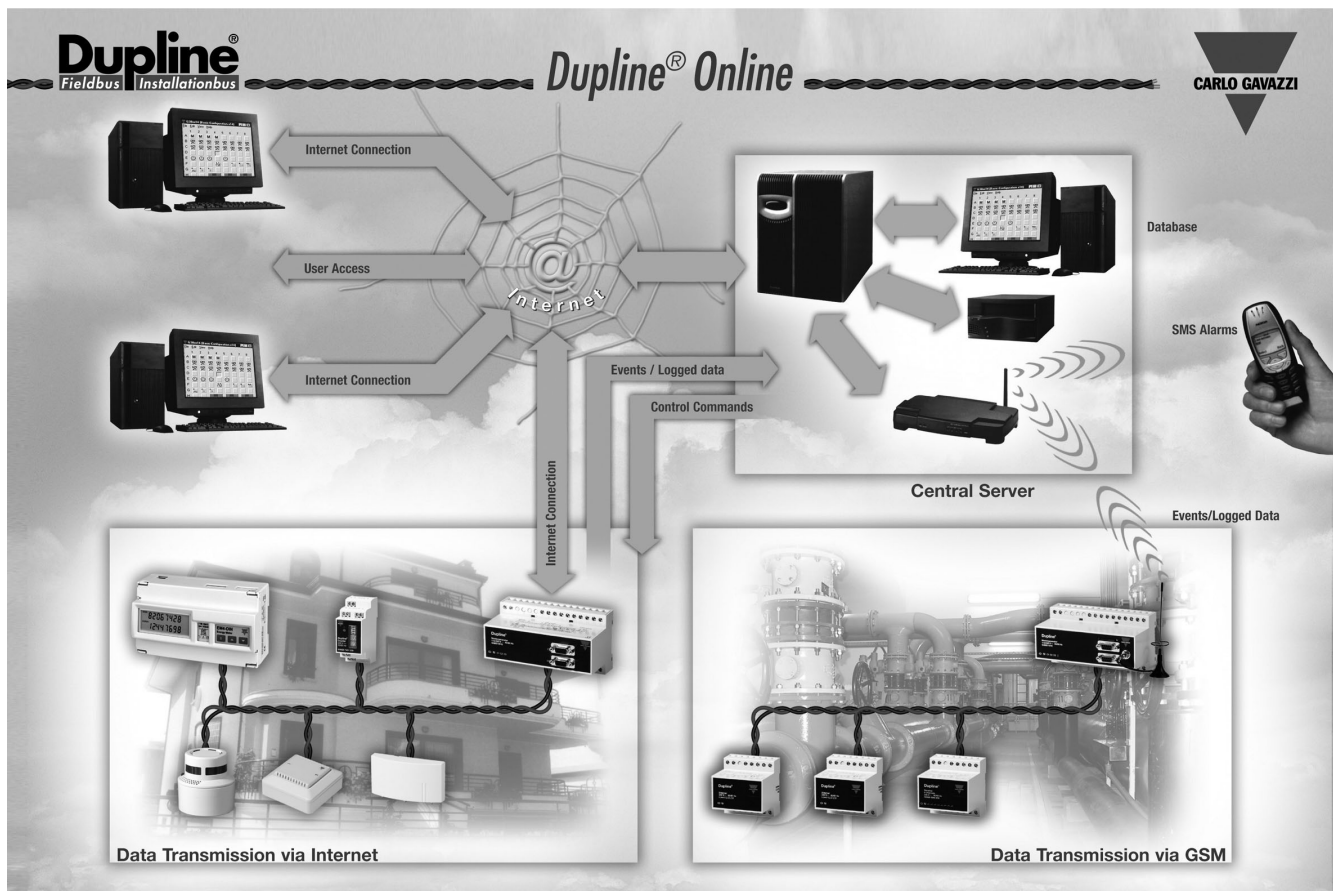
The Dupline®-Online concept consists of the following elements:

1. Remote or local Dupline networks each using a Dupline® Data Logger (G3800X036) as channel generator.
2. The central Dupline-Online Webserver provided by Carlo Gavazzi
3. Any PC with Internet connection

Find below a principle diagram for the Dupline®-Online concept

The Dupline® networks collects and controls all desired field data such as energy, water and gas consumption, alarms, lighting, pumps, movement detectors, temperature, humidity, pressure, fluid levels etc. The Dupline® Data Logger (G3800X036) can be programmed to log any combination of digital, analogue and counter signals based on events or time and send them to the central Dupline®-Online Server via the Internet or via the built-in GSM Modem (optional). It is also possible to switch digital Dupline® signals from the Central Dupline®-Online Server, but only when the Internet is used for data transmission.

Mode of Operation (cont.)



After the Dupline® Data Logger has been programmed, it needs to be registered. In this way the Central dupline-online Server gets the unique ID code of the Data Logger and it gets information about the descriptions and scaling of the data that it will receive from the Data Logger via the Internet or the GSM network. During registration, the user also gets a user name and password (unless the Data Logger is registered under an existing user name).

Each log record sent to the Central dupline-online Server by the Dupline® Data Logger contains the unique ID code from the Dupline® Data Logger that sent it, enabling the Server to save the data in the log record under the correct user name and device number in the database. The Dupline® Data Logger will continue to send the log record until the dupline-online Server or GSM provider acknowledges it. Data transmitted via the Internet is protected by encryption, and data transmitted via the GSM network is protected by check of the phone number of the transmitting device.

After the Dupline® Data Logger has been registered, the user gets access to the logged data and events on the dupline- online Server by entering his user name and password. All the data presented in tables and buffers are shown with time and date stamp. The user menu makes the following functions available:

- Tables with "last logs" for digital, analog and consumption

values. The status of digital signals are shown on a real-time basis, because the logging of these is event-based.

- Tables with historical data for a specific signal over a certain period
- Tables with historical data for all signals over a certain period
- Alarm handling system with alarm buffer showing all the events on Dupline® addresses selected by the user (only Digital and Analink setpoint can be selected). The system includes the possibility to acknowledge the alarms, which is also included in the alarm buffer with time and date stamp.
- Possibility to send out alarms as SMS messages or E-mails
- Logged analog signals can be displayed as trend graphs, with possibility to scan through time and zoom on parts of the graph.
- Consumption data (e.g. energy, water or gas) can be displayed as histograms or curves
- All logged data can be exported as EXCEL-files
- Digital Dupline® signals can be switched from the Dupline-Online user menu. This feature is only available if data is transmitted via the Internet and if this possibility has been selected by the user.

Back-up of the Dupline-Online Server database is made on a daily basis. The logged data is kept in the database for a period of 3 years. One dupline-online subscription includes

Mode of Operation (cont.)

the capacity for 500.000 logs, where a logging can be a digital event, an analog alarm, an analog value or a counter value. The subscription also includes the possibility for the dupline-online server to send out 50 SMS alarm messages,

and it is possible to buy capacity for more.

The screenshot displays the Dupline Online web interface in a Microsoft Internet Explorer browser. The interface is divided into several sections:

- Latest logs:** A table showing log entries with columns for Address, Description, Type, Status, Digital Counter, Logged, Received, and Log sequence. It includes a filter for "Show only logs with valid values" and "Show only logs for the active channel configuration".
- Digital channels:** A table listing digital channels with columns for Address, Description, Type, Digital Counter, Logged, Received, and Log sequence. Channels include Window sensor, Code lock, Living room light, Room 1 light, Room 2 light, Bath room light, Television, Coffee maker, Kitchen light, and Bed room light.
- Analog channels:** A table listing analog channels with columns for Address, Description, Type, and Value. Channels include Inside, Outside, Server room, and Light intensity.
- Max Counter channels:** A table listing maximum counter channels with columns for Address, Description, and Value. Channels include Living room light ON time and Coffee maker consumption.
- Monthly overview:** A section for the month of December 2004, featuring a bar chart titled "Living room light ON time" showing values for various apartments.
- Energy Consumption:** A table showing energy consumption data for various apartments, with columns for Description, From, To, Energy, Cold water, and Hot water.
- Chart:** A line chart titled "M2: Outside" showing temperature data over time from January 7, 2004, to January 15, 2005. The chart includes options for Value, Minimum, Maximum, and Average.

По вопросам продаж и поддержки обращайтесь:

Алматы (7273)495-231	Казань (843)206-01-48	Новокузнецк (3843)20-46-81	Смоленск (4812)29-41-54
Архангельск (8182)63-90-72	Калининград (4012)72-03-81	Новосибирск (383)227-86-73	Сочи (862)225-72-31
Астрахань (8512)99-46-04	Калуга (4842)92-23-67	Омск (3812)21-46-40	Ставрополь (8652)20-65-13
Барнаул (3852)73-04-60	Кемерово (3842)65-04-62	Орел (4862)44-53-42	Сургут (3462)77-98-35
Белгород (4722)40-23-64	Киров (8332)68-02-04	Оренбург (3532)37-68-04	Тверь (4822)63-31-35
Брянск (4832)59-03-52	Краснодар (861)203-40-90	Пенза (8412)22-31-16	Томск (3822)98-41-53
Владивосток (423)249-28-31	Красноярск (391)204-63-61	Пермь (342)205-81-47	Тула (4872)74-02-29
Волгоград (844)278-03-48	Курск (4712)77-13-04	Ростов-на-Дону (863)308-18-15	Тюмень (3452)66-21-18
Вологда (8172)26-41-59	Липецк (4742)52-20-81	Рязань (4912)46-61-64	Ульяновск (8422)24-23-59
Воронеж (473)204-51-73	Магнитогорск (3519)55-03-13	Самара (846)206-03-16	Уфа (347)229-48-12
Екатеринбург (343)384-55-89	Москва (495)268-04-70	Санкт-Петербург (812)309-46-40	Хабаровск (4212)92-98-04
Иваново (4932)77-34-06	Мурманск (8152)59-64-93	Саратов (845)249-38-78	Челябинск (351)202-03-61
Ижевск (3412)26-03-58	Набережные Челны (8552)20-53-41	Севастополь (8692)22-31-93	Череповец (8202)49-02-64
Иркутск (395)279-98-46	Нижний Новгород (831)429-08-12	Симферополь (3652)67-13-56	Ярославль (4852)69-52-93
Россия (495)268-04-70	Киргизия (996)312-96-26-47	Казахстан (7172)727-132	

cgo@nt-rt.ru || <https://gavazzi.nt-rt.ru/>